



Lastolite™

By
Manfrotto

Lastolite By Manfrotto is one of the world's leading manufacturers of Lighting Control Systems and Backgrounds for creative filmmakers and content creators. Established in 1978 with just one product, the very first patented collapsible 'pop-up' reflector, the company now boasts a comprehensive market leading range of over 50 different products. Primarily focused on imagemakers who are regularly on the move, all Lastolite By Manfrotto products whether it be a reflector panel, diffuser panel or a Chroma Key background system, are each cleverly designed to fold down small for ultimate portability, but also extremely fast to assemble when on location.

Designed and manufactured in the UK, Lastolite By Manfrotto has become known for their Innovative design, high quality manufacturing processes and ultimate reliability in the field. Regularly referred to as the 'trusted' brand for professionals, they make products that perform to the highest standards, even in the most demanding situations. Innovation excellence sets Lastolite By Manfrotto apart from its competitors, resulting in a number of active patents and registered designs.

Reflectors & Diffusers

HaloCompact Reflector and Diffuser

The HaloCompact boasts a patent pending design concept that makes the everyday reflector and diffuser panel even more portable than ever!

Unlike many traditional reflector/diffuser panels that incorporate a steel rim pop up design, the 82cm (32") HaloCompact is constructed using Lastolite By Manfrotto's new innovative RapidExoFrame™ technology. The collapsible lightweight aluminium frame quickly slots together and the reflector or diffuser fabric simply clips onto the frame. The cleverly designed RapidExoFrame™ construction allows the frame to breakdown into small multiple sections and along with the folded fabric packs into a carry case measuring only 6.5 x 27 x 6.5cm (2.5" x 10.5" x 2.5") weighing only 390g (reflector and case). The ultra-compact folded dimensions make the Halo Compact the perfect 'always with you' solution for Imagemakers on the move.

The HaloCompact also features an ergonomically designed handle so it can easily be held and accurately positioned with one hand. The handle also incorporates a very useful ¼" thread (plus a ¼" to ¼" adaptor), enabling it to be easily attached to various different support systems, to offer secure positioning further away from camera position.

Features and Benefits

- Ultra compact when folded down
- Weighs only 390g
- Incorporates a ¼" thread in the handle
- Fits easily in a camera bag



HaloCompact Reflector Silver/White

HaloCompact Diffuser 2 Stop



Ergonomically designed handle with useful ¼" thread

Specifications

HaloCompact 82cm (32")	Code
Reflector Silver/White	LL LR3300
Diffuser 2 Stop	LL LR3301

HaloCompact Covers 82cm (32")	Code
Reflector Cover Silver/White	LL LR3302
Diffuser Cover 2 Stop	LL LR3303



With HaloCompact Diffuser



Without HaloCompact Diffuser

Skylite Rapid

The Skylite Rapid is the go to solution for location imagemakers who need to diffuse or reflect their light source in the most demanding situations. The Skylite Rapid's lightweight, rapid assembly, collapsible aluminium rigid frame offers ultimate stability even in windy conditions, whilst the clip on covers simply clip in place and offer a complete range of diffusion and reflective surfaces.

The Skylite Rapid frames, covers and accessories are all available separately, so you can mix and match as you choose. For greater value, kits are also available, which collapse down into a neat, compact and very portable rigid carry case.

Note: All Skylite frames are compatible with the original Skylite covers and Skylite Rapid covers.

Features and Benefits

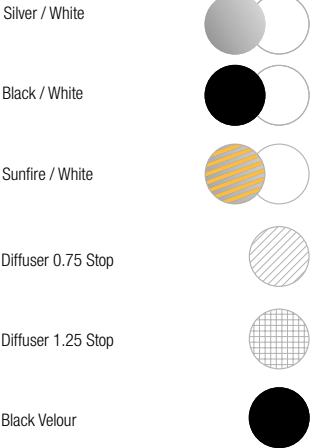
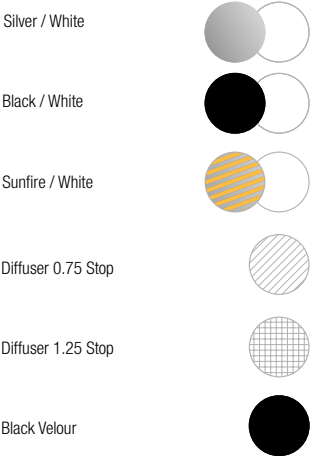
- Lightweight Aluminium frame
- Resistant to rust so ideal for outdoor use
- Internal elasticated cord running through
- Rapid clip on covers
- Kits include rigid carry case

Specifications

Skylite Rapid Covers	Small Covers 1.1m x 1.1m (3'6" x 3'6") Code	Medium Covers 1.1m x 2m (3'6" x 6'6") Code	Large Covers 2m x 2m (6'6" x 6'6") Code	Midi Covers 1.5m x 1.5m (5' x 5') Code	Extra Large Covers 3m x 3m (10' x 10') Code
Black / White	LL LR81121R	LL LR81221R	LL LR81521R	LL LR82221R	
Sunfire / White	LL LR81106R	LL LR81206R		LL LR82206R	
Silver / White	LL LR81131R	LL LR81231R	LL LR81531R	LL LR82231R	
1.25 Stop Diffuser	LL LR81107R	LL LR81207R	LL LR81507R	LL LR82207R	LL LR83307R*
0.75 Stop Diffuser	LL LR81101R	LL LR81201R	LL LR81501R	LL LR82201R	LL LR83301R
Black Velour	LL LR81102R	LL LR81202R		LL LR82202R	LL LR83302

*The 1.25 stops is manufactured using two panels with a single seam running through the centre of the diffuser joining the panels.

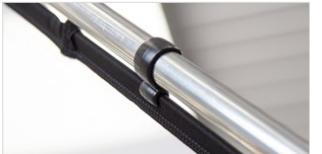
Skylite Rapid Frames	Weight	Size	Code	Skylite Rapid Kits	Silver/White Reflector	1.25 Stop Diffuser	Frame	Rigid Case	Code
Skylite Rapid Frame Small	1.1kg (2.4lb)	1.1m x 1.1m (3'6" x 3'6")	LL LR811	Skylite Rapid Small Kit	1	1	1	1	LL LR81143RC
Skylite Rapid Frame Medium	1.6kg (3.5lb)	1.1m x 2m (3'6" x 6'6")	LL LR812	Skylite Rapid Medium Kit	1	1	1	1	LL LR81243RC
Skylite Rapid Frame Midi	1.5kg (3.3lb)	1.5m x 1.5m (5' x 5')	LL LR815	Skylite Rapid Midi Kit	1	1	1	1	LL LR81544R
Skylite Rapid Frame Large	2.1kg (4.6lb)	2m x 2m (6'6" x 6'6")	LL LR822	Skylite Rapid Large Kit	1	1	1	1	LL LR82243RC
Skylite Rapid Frame Extra Large	3kg (6.6lb)	3m x 3m (10' x 10')	LL LR833	Skylite Rapid Extra Large Kit		1	1	1	LL LR83344R



Skylite Rapid Accessories	Code
Skylite Rapid Griphead	LL LA8446
Skylite Rapid Crossbar Handle	LL LA8449
Rigid Case 78cm x 19cm x 14cm	LL LRCASE775
Rigid Case 103cm x 19cm x 14cm	LL LRCASE1025



LL LA8446 Skylite Rapid Griphead



The Skylite Rapid cover simply clips to the frame



Skylite Rapid Kit



Skylite Rapid Rigid Case

Colour and Exposure Control

EzyBalance

The EzyBalance is a handy double-sided 'pop up' 18% grey/white card, which simplifies the complex technical issues surrounding exposure and colour correction when working in different lighting conditions. A unique focusing target enables the camera to focus on the card and take the necessary readings. A waterproof version is also available for scuba divers. Available in 3 sizes.

Features and Benefits

- Colour correction, pre and post capture
- Exposure control, pre and post capture
- Accurate colour rendition
- Collapsible, durable and cleanable
- Double sided
- Unique focusing target
- Collapses to a third of its original size

Specifications

EzyBalance	Code
30cm (12") 18%	LL LR1250
50cm (20") 18%	LL LR2050
75cm (30") 18%	LL LR3050

EzyBalance for Scuba Divers

30cm (12") 18%	LL LR1252
----------------	-----------



EzyBalance used to correct the light on the subject from 'Daylight' LED Key light and create a warm light effect from the Tungsten light source behind.



EzyBalance 18% (divers version) LL LR1252



EzyBalance 18%



Chroma Key Backgrounds

Panoramic Chroma Key Backgrounds

The Panoramic background is one of our widest, crease free textile surfaces. It features a collapsible three panel aluminium framework, creating a useful self-supporting wraparound structure. The Chroma Key Green fabric cover simply clips to the framework. The background folds down neatly into its own case and fits easily into a car.

Features and Benefits

- Up to 4m (13') wide and 2.3m (7'5") high
- Self-supporting
- Weighs only 9kg (19.8lb)
- Packs into a 100cm x 30cm x 35cm (39" x 12" x 13.5") bag

Specifications

Panoramic Background 4m (13')	Code
Panoramic Background - Chroma Key Green	LL LB7622
Panoramic Background - Chroma Key Blue	LL LB7943
Panoramic Background Cover - Chroma Key Green	LL LB7626
Panoramic Background Cover - Chroma Key Blue	LL LB7963
Panoramic Background Connection Kit 2.3m (7'5") Chroma Key Green	LL LB7945
Panoramic Background Connection Kit 2.3m (7'5") Chroma Key Blue	LL LB7944



Panoramic Chroma Key Green Swatch



Chroma Key Green



Chroma Key Blue



Chroma Key Collapsible Backgrounds

A range of collapsible, reversible, plain coloured textile backgrounds. Available in different sizes, a simple solution for flat plain coloured backgrounds, the seamless paper effect but in a collapsible portable format! Two great backgrounds in one with a pop up construction that provides today's image makers with a truly portable solution for easy transportation. Available in Chroma Key green and Chroma Key blue.

Features and Benefits

- Crease resistant
- Chroma Key rim tape
- Collapses to a third of its original size
- Available in green and reversible blue/green
- Comes with carry case

Specifications

Chroma Key Collapsible Background	Size	Code
Chroma Key Blue/ Green Reversible	1.5m x 1.8m (5' x 6')	LL LC5687
	1.8m x 2.1m (6' x 7')	LL LC5987
	1.8m x 2.1m (6' x 7')	LL LC5981
Chroma Key Green	1.8m x 2.75m (6' x 9')	LL LC6981

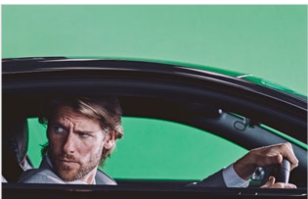
Chroma Key Collapsible Swatches



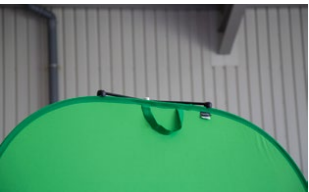
Chroma Key Green



Chroma Key Blue



Magnetic Background Support LL LB1120



Magnetic Background Support LL LB1120



Portable Backgrounds

Vintage Collapsible Backgrounds

The vintage collapsible backgrounds offer a range of versatile subtly textured surfaces, great for interview style filming. These 1.5 x 2.1m (5' x 7') reversible backgrounds provide a very fashionable, timeless hand painted look that subtly complements the chosen subject. Two great backgrounds in one with a collapsible pop up construction that provides today's image-makers with a truly portable solution for easy transportation.

Features and Benefits

- Timeless hand painted look
- Subtle textured surface
- Reversible
- 6 different colour tones
- Collapses to a third of its original size
- Comes with carry case

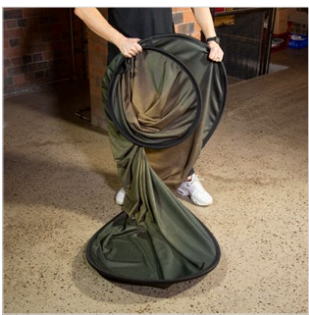
Specifications

Vintage Collapsible Backgrounds	1.5 x 2.1m (5' x 7')
Tobacco/Olive	LL LB5705
Smoke/Concrete	LL LB5745
Joe McNally Ironworks	LL LB5750JM

Some camera sensors may interpret the colours used on our printed backgrounds differently.



Magnetic Background Support LL LB1120



Tobacco/Olive LL LB5705

Vintage Collapsible Background Swatches



Tobacco LL LB5705



Olive LL LB5705



Smoke LL LB5745



Concrete LL LB5745



Joe McNally Ironworks
LL LB5750JM



Joe McNally Ironworks
Monochrome LL LB5750JM

